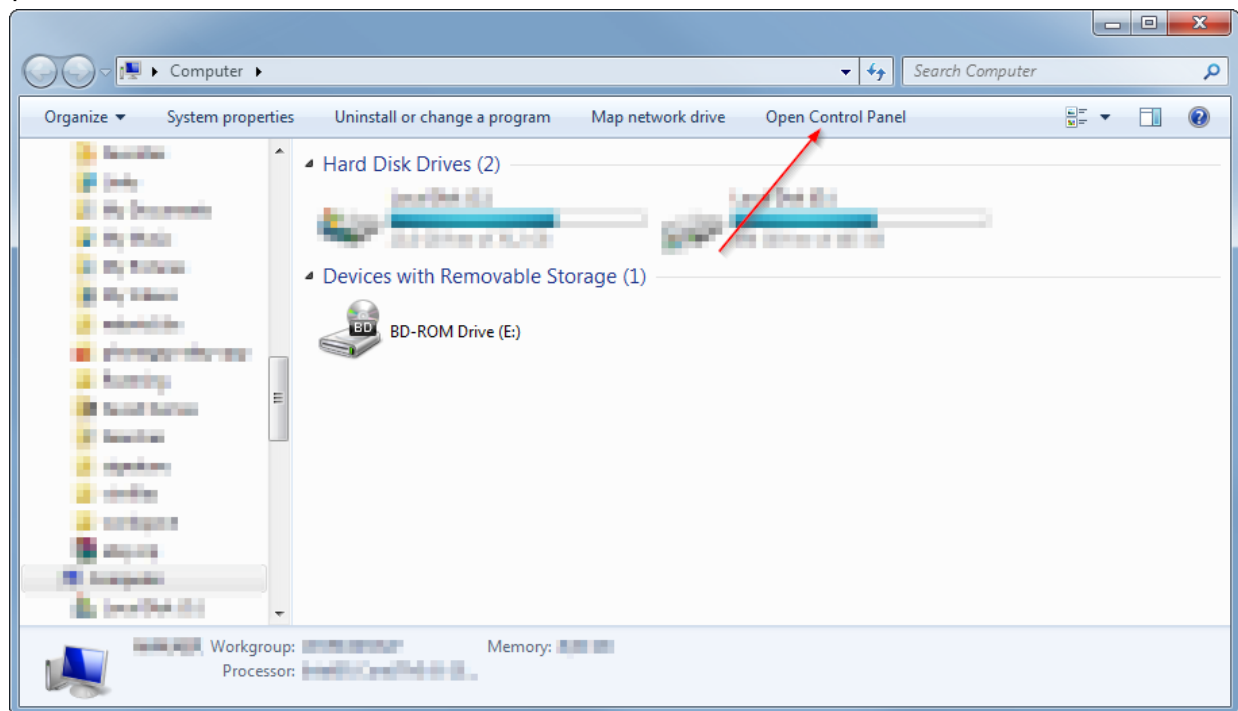


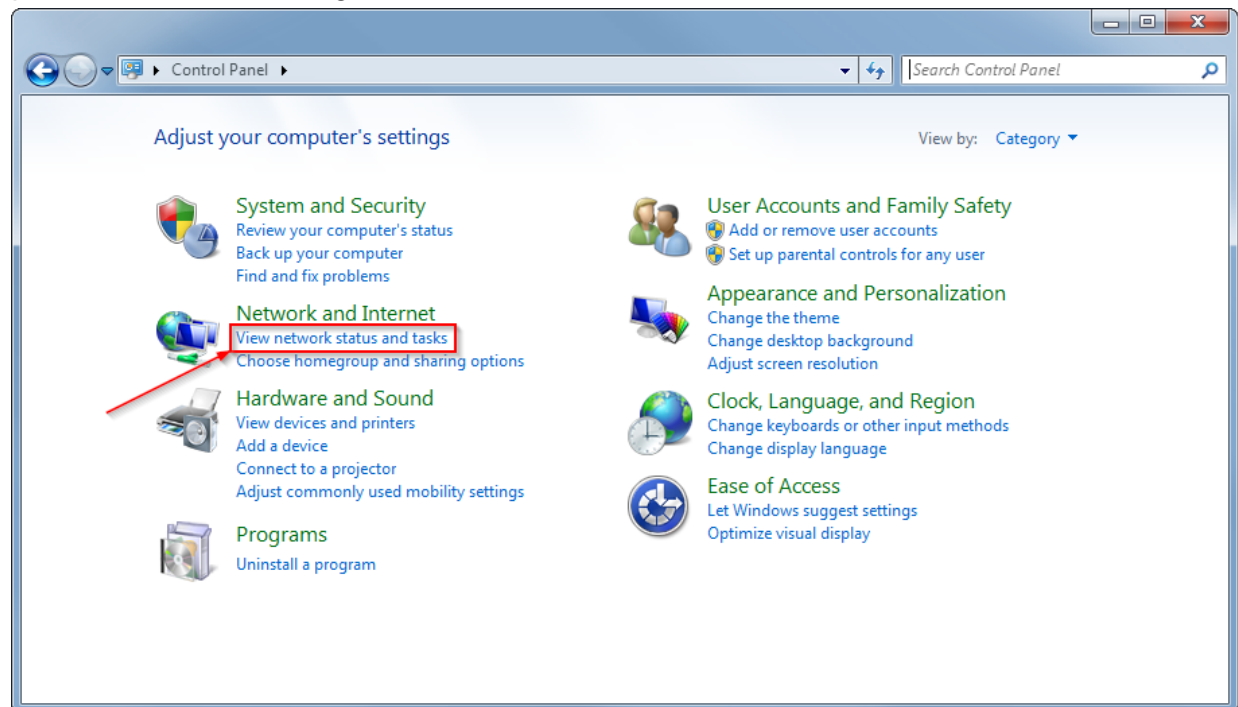
# How to configure Wi-Fi on ABK

Follow these 13 steps, and it should work. Procedure was done in Windows 7, but should be identical for Windows 8.

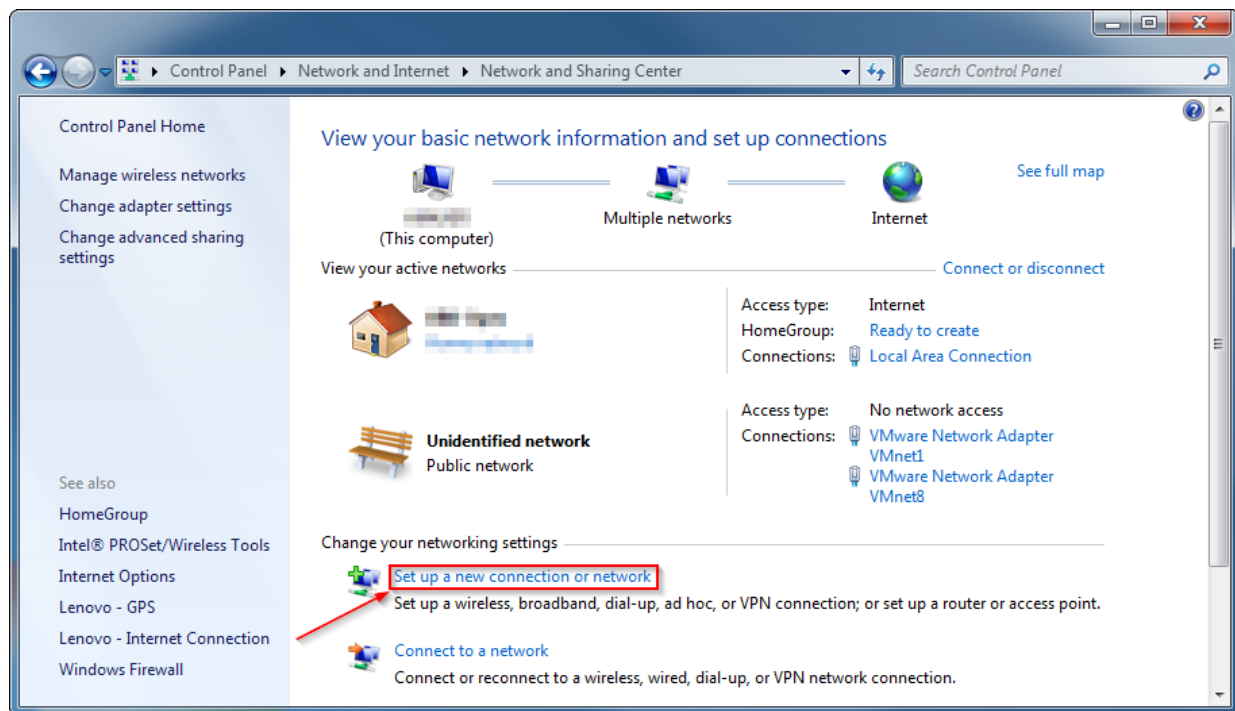
## Step 1. Open Control Panel



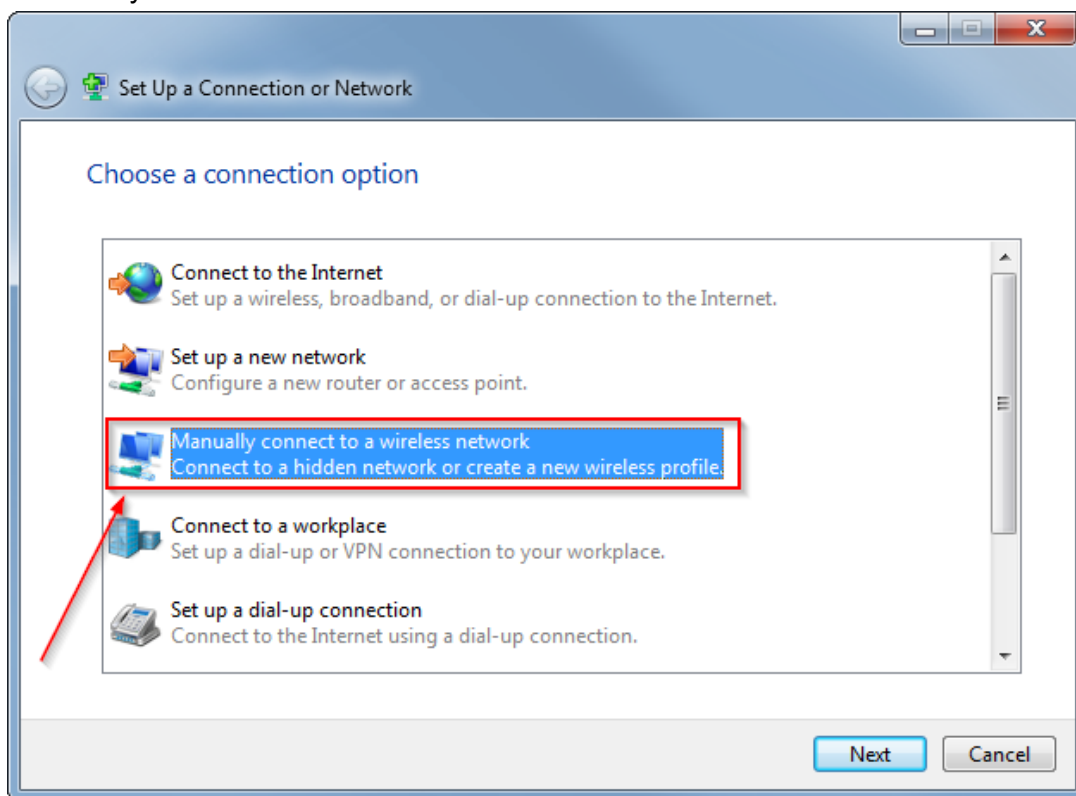
## Step 2. Open Network and Sharing Center



## Step 3. Set up a new connection or network



Step 4. Choose Manually connect to a wireless network



Step 5. Choose the settings as shown on the picture

Manually connect to a wireless network

Enter information for the wireless network you want to add

Network name: ABK

Security type: WPA2-Enterprise

Encryption type: AES

Security Key:  ☐ Hide characters

☒ Start this connection automatically

☐ Connect even if the network is not broadcasting

Warning: If you select this option, your computer's privacy might be at risk.

Next Cancel

Step 6. Change connection settings

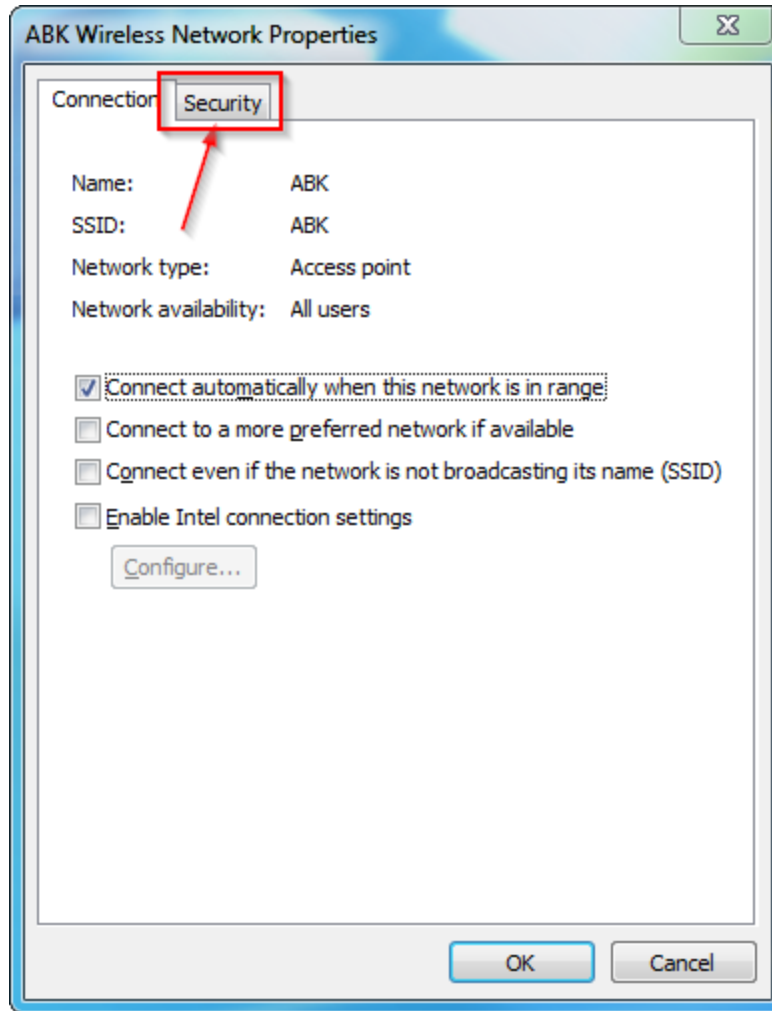
Manually connect to a wireless network

Successfully added ABK

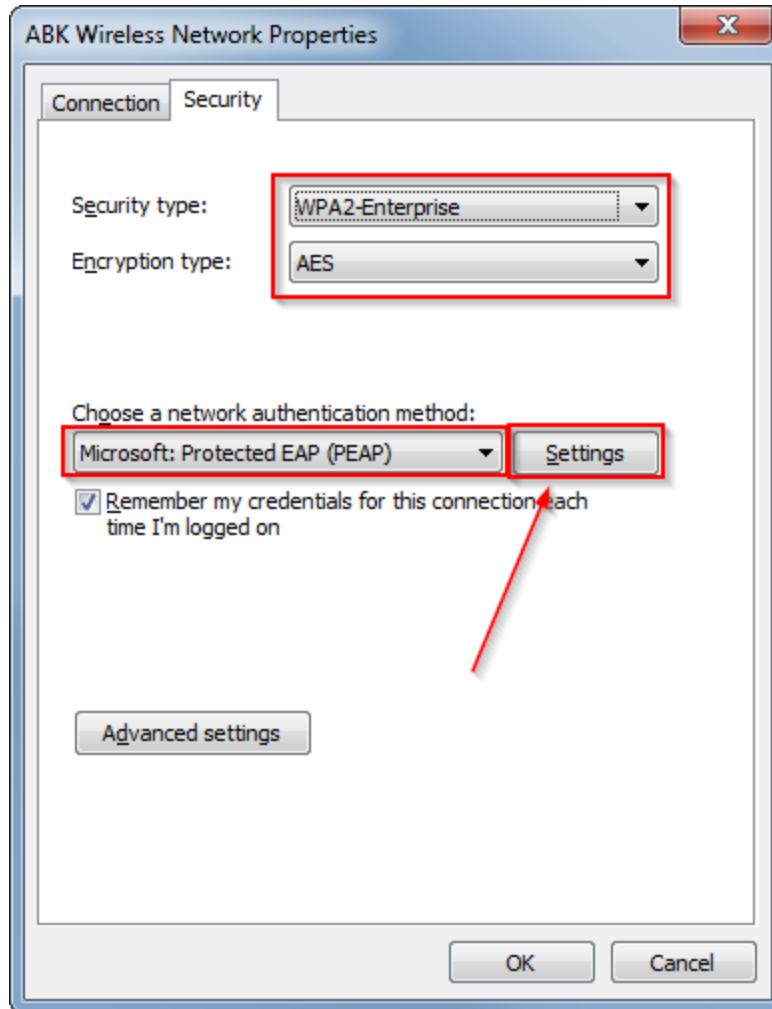
→ Change connection settings  
Open the connection properties so that I can change the settings.

Close

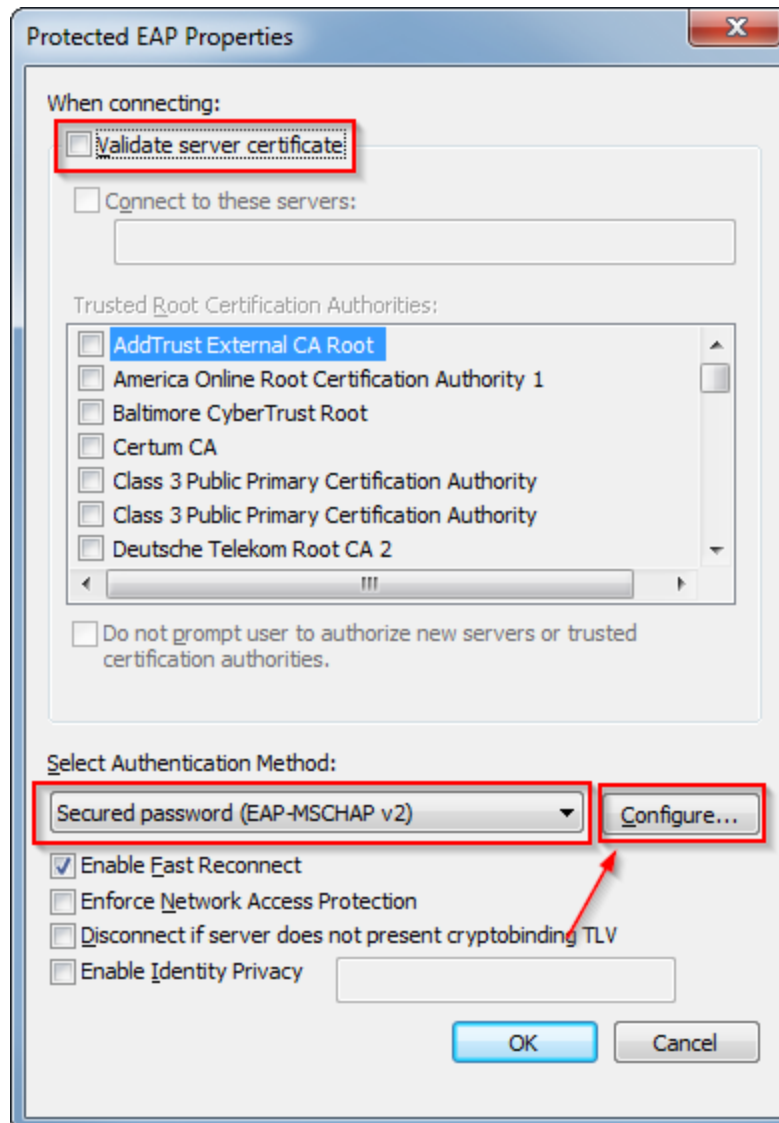
## Step 7. Select Security tab



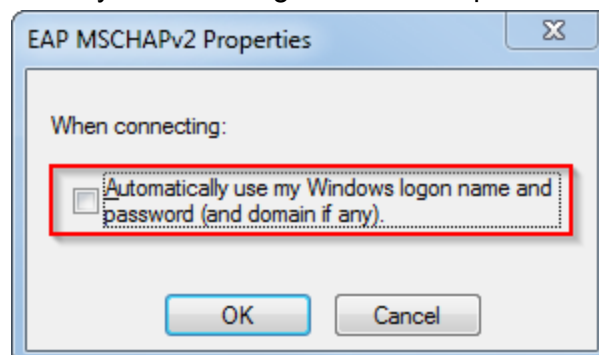
Step 8. Validate that the settings are as shown on the picture and click on Settings



Step 9. Uncheck validate server certificate and choose secured password (EAP-MSCHAP v2) as shown on the picture, and click Configure

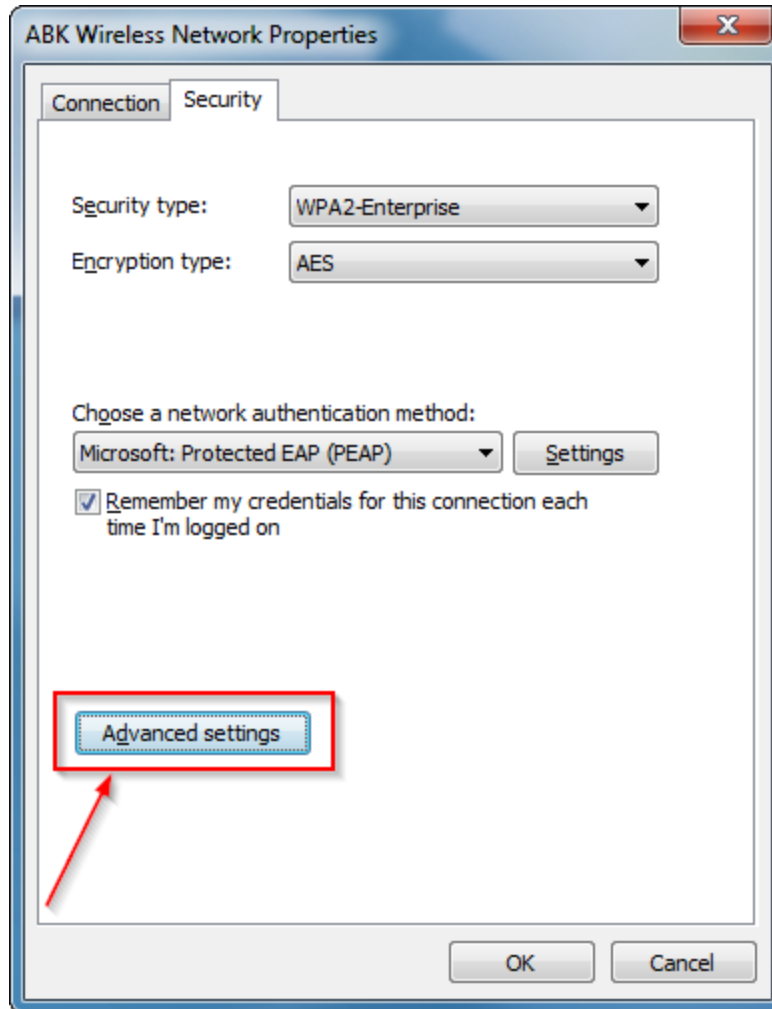


Step 10. Uncheck "Automatically use my Windows logon name and password (and domain if any)."

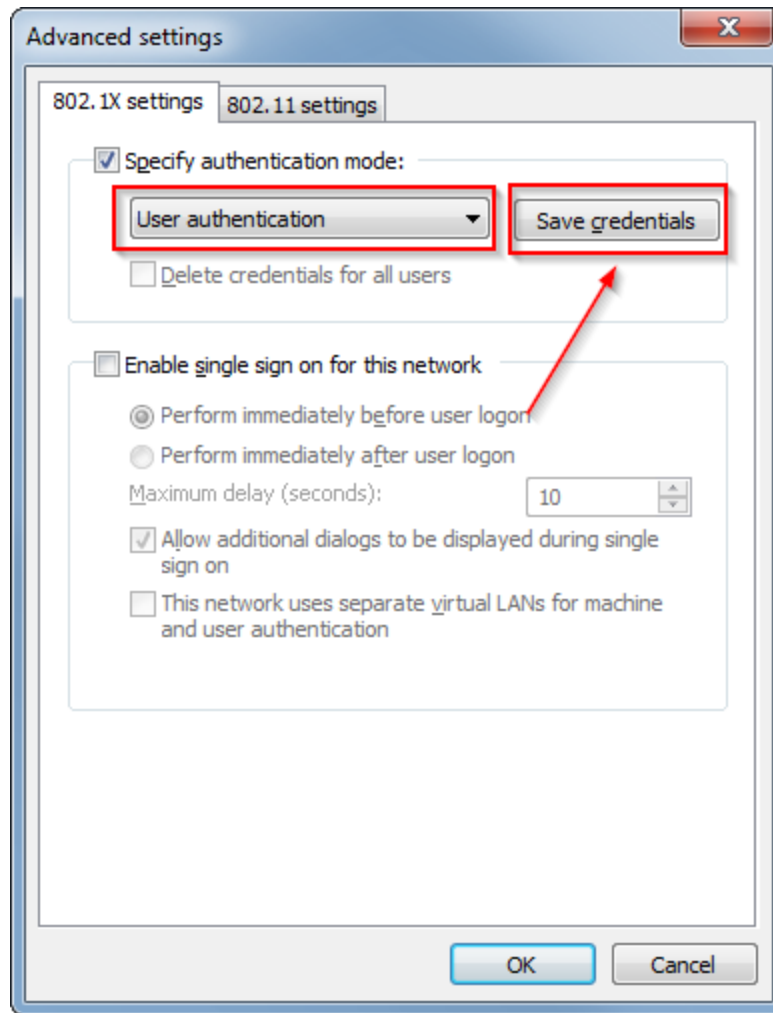


Hit OK until you get back to the dialog at step 8, or as shown in the next step.

Step 11. Click Advanced settings

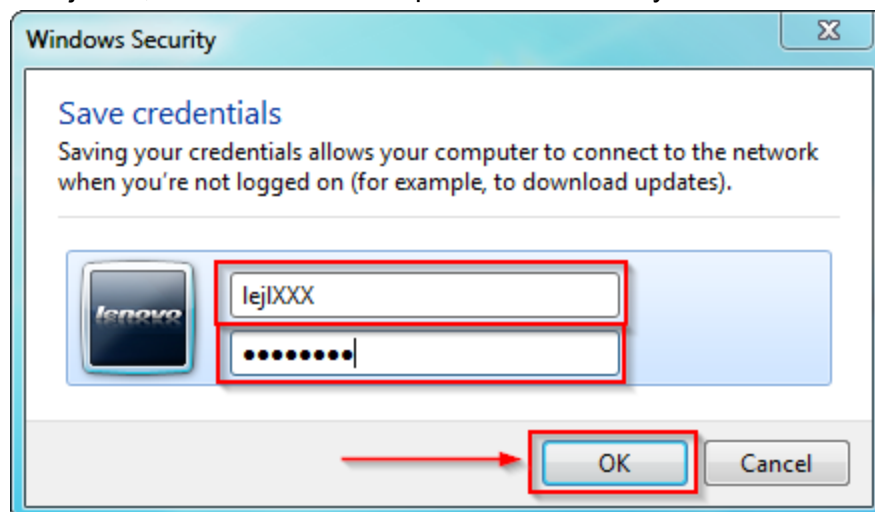


Step 12. Check “Specify authentication mode” and choose user authentication in the dropdown, and then click Save credentials



Step 13. Input your user credentials, which you should have received before reading this guide. If not, refer to the steps on the last page of this guide.

Your typical username is lejXXXX, where XXX is the apartment number you live in.



Step 14. There is no step 14, click OK and close the network and sharing center. You're done!

# How to get a password

You have 2 options.

## **1. option (preferred as you can do it yourself)**

### **Requires a network cable**

Step 1. Connect your computer with a network cable to the outlet in the wall. (The **GREEN** outlet)

Step 2. Go to the site <http://abknet.abk-aalborg.dk> - If you are connected through the outlet in your wall, you should be presented with 3 fields, which you fill out, and then you received your username and password.

## **2. option**

Contact the caretaker Hans in his office hours.

<http://abk-aalborg.dk/kontakt>